

The Cancer
Screening
Trust

CST

Trucheck Intelli Information Pack



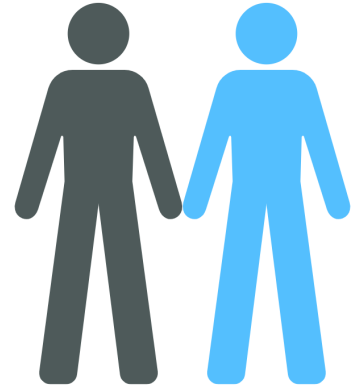
MULTI-CANCER EARLY DETECTION SCREENING

A simple blood test helps find cancer early and saves lives.

WHY IS CANCER SCREENING IMPORTANT?

1 in 2 people in the UK, born after 1960, will be diagnosed with cancer in their lifetime.¹ Currently, half of these people are diagnosed after the cancer has spread.²

Finding cancer early, before symptoms arise can significantly improve your chances of survival.



1. Cancer Research UK, 1 in 2 people in the UK will get cancer [Internet]; 2015, Feb 4, [cited 2022, Sep 25]
2. Cancer Research UK, Cancer statistics for the UK [Internet]; [cited 2022, Sep 25]

1 in 2

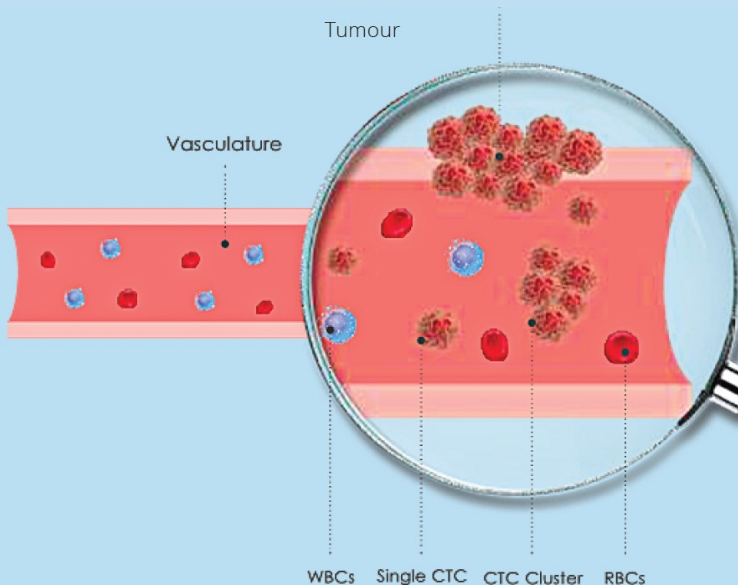


WHY TRUCHECK?

Numerous cancers currently **lack screening processes for early detection** and many cancers are **asymptomatic until the tumour has grown and spread throughout the body.**

Trucheck Intelli is a simple revolutionary blood test that can **detect cancer early before symptoms arise.** It looks for multiple cancers, many of which are not covered in national routine screening programmes.

Consequently, this test can help **avoid late-stage cancer diagnosis** which is paramount to reducing **cancer-related deaths** and improving patient outcomes **with less intensive and expensive treatments.**



Metastatic cancer occurs due to the result of tiny cells and tumour fragments shedding into the bloodstream which are called **circulating tumour cells (CTCs)**. These cells are responsible for metastases where **cancer spreads** to distant, non-malignant tissues, especially when they move in clusters. **Trucheck** can detect CTCs from your blood sample and are analysed to determine the likely **tissue or organ of origin**. Healthcare professionals then carry out a targeted follow-up investigation and treat patients if necessary.



Trucheck™ -Intelli

Trucheck is designed to be used in addition to, and not replace conventional screening.

HOW DOES TRUCHECK FIND CANCER EARLY?

WBC – White Blood Cell
CTC – Circulating Tumour Cell
RBC – Red Blood Cell

HOW MANY CANCERS CAN TRUCHECK INTELLI FIND?

Trucheck Intelli can detect over **70** different types of solid organ cancers including those most prevalent such as **breast, lung, bowel, and prostate** as well as many others that are not routinely screened for. These cancers account for **81% of all cancer cases globally** and include several types of aggressive cancers.

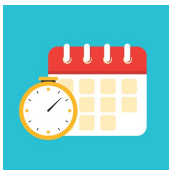
ADVANTAGES OF TRUCHECK

1

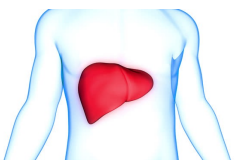
Single test for finding multiple cancers



Peace of mind



Quick and easy blood test



Can indicate the likely tissue or organ of origin

HOW DO I GET A TRUCHECK TEST?

1. An enquiry is made through our website (www.thecancerscreeningtrust.co.uk) or through a telephone call (**01935 725005**).
2. **Initial Consultation:** one of our team members will call you to find out more about your **family history**, **risk profile** and whether the Trucheck test is suitable for you.
3. We will send an **information pack** to your email address which contains more information about the blood test as well as a medical questionnaire to determine your **cancer risk profile**.
4. Once the medical questionnaire is completed, our clinical team will assess it and determine which **test** would be the most suitable for you.
5. Next, we will call you to arrange a **blood draw appointment** at one of our clinics across the UK.
6. Following your blood draw appointment, your blood sample will be sent to our **laboratory** and is analysed, which takes approximately **two weeks**.
7. After the sample has been analysed, we will call you with your **results** and send over the written report to your email address.
8. You will then have a **consultation with our in-house doctor or oncologist** who will go through your results in more detail and answer any other health queries you may have.

The Cancer
Screening
Trust

CST

FAQs

Updated 1st October 2023



WHO IS THE CANCER SCREENING TRUST?

We are a not-for-profit organisation set up to make Multi-Cancer Early Detection tests easy and affordable. We help you to take control of your long-term health plans by giving you as much relevant information as possible and constantly searching for the best novel technologies. We work on a case-by-case basis, ensuring each client has personalised care and a healthcare plan set in place based on what would be most effective for you.

WHAT HAPPENS WHEN I BECOME A CLIENT OF THE CST?

We make the process as simple and easy to use as possible. Once we have answered all your initial questions, we ask you to complete a full medical questionnaire. This will allow our clinical team to assess your medical and family history and cancer risk profile.

Upon completion, we arrange an appointment at our Central London clinics where our highly trained nurses perform the phlebotomy, taking a 25ml blood sample. Your sample will then be couriered directly from the clinic to our laboratory in Guildford and assessed by our clinical experts for circulating tumour cells.

WHEN DO I GET THE RESULTS FROM THE BLOOD TEST?

The test results are returned from the laboratory in approximately two weeks. As soon as we receive them, we will contact you to let you know the outcome. A written report will then be sent directly to you, and we will organise a consultation with our in-house doctor to discuss the results in more detail and the best steps going forward.

WHAT TEST WILL I BE GIVEN?

Upon completion of your medical questionnaire, our clinical team will determine which out of our range of tests will be most suitable for you. The general guidelines for our tests can be found below, however please always seek advice from our clinical team in the first instance.

TEST	CRITERIA
Trucheck Intelli	Asymptomatic individuals, over 40 years old
Trucheck single organ (breast, prostate, colon)	Asymptomatic individuals with a particular family history / concern
Trublood	Symptomatic individuals advised for an invasive tissue biopsy or cases where invasive biopsy has been inconclusive

As CST is independent, we can offer clients any and all blood tests on the market, that have a proven track record for sensitivity and specificity. We continually monitor the market to bring the most effective and up to date test to our clients.

HOW DOES THE TRUCHECK INTELLI BLOOD TEST WORK?

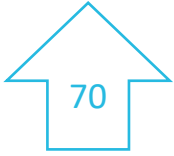
Trucheck Intelli from Datar Cancer Genetics is a new blood-based paradigm in multicancer detection. It is a non-invasive blood test that can detect over 70 different types of cancer in asymptomatic individuals. It detects cancer by the presence of circulating tumour cells (CTCs) and clusters of CTCs which are released by malignant tumours into circulation but not from non-cancerous (normal, benign tumour, inflammatory) tissue. Therefore, CTCs are ubiquitously seen in the blood of cancer patients but absent in the blood of healthy individuals.

Trucheck inspects these CTCs further for a molecular imprint of the tumour mass to determine the tissue or organ from which they originated. This guides further investigation and reduces diagnostic trial and error.

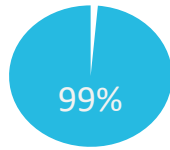
HOW ACCURATE ARE THE RESULTS OF THE INTELLI TEST?

The Trucheck Intelli has 88.2% sensitivity in detection of cancer across all stages and types and a further 93.1% accuracy in determining the tissue or organ of origin in positive cases. Thus, even early stage cancers are reliably detected. Furthermore, Trucheck specificity is 96.3% in asymptomatic individuals and 95% in individuals with benign tumours.

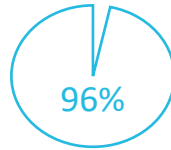
The Trucheck Intelli Blood Test



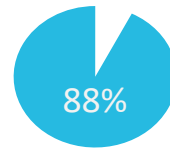
Detects over 70
cancers



99% Specificity



96% Accuracy



88% Sensitivity

WHO IS THE INTELLI TEST RECOMMENDED FOR?

The Intelli blood test is recommended for asymptomatic individuals above the age of 40 years old. However, our clinical team will assess every client individually so in some cases, the age limit would be lowered depending on your medical and family history as well as genetic predisposition.

WHY IS IT IMPORTANT TO HAVE REGULAR SCREENING FOR CANCER?

The key to better managing cancer is early detection when the cancer is still localised and has not spread beyond its primary site. Cancers detected at these early stages require less intensive treatments and are more responsive to treatments with higher survival rates. It can also minimise the requirement for intensive or invasive procedures in individuals without cancer.

DOES THE CST PROGRAMME REPLACE CONVENTIONAL CANCER SCREENING?

No, you can continue to receive screening as part of the NHS national screening initiatives. We offer appointments with a clinician in a private setting and with easy access to blood tests, and MRI scans without delay. In addition, you can obtain a referral from our in-house doctor, without having to approach your GP.

IS THIS TEST AVAILABLE ON THE NHS?

The test is currently only available privately. We are, however, in discussion with various NHS bodies to organise trials and bring this to the widest audience possible.

DO I NEED TO HAVE AN MRI SCAN AS WELL AS A BLOOD TEST?

The blood test and Whole-Body MRI scan are two separate parts of the programme and can be chosen independently. In accordance with your medical questionnaire, our clinical team will assess your medical and family history, together with your blood test result to best advise you on whether an MRI is recommended.

WHAT IS A FULL BODY MRI SCAN?

MRI (magnetic resonance imaging) is a type of scan that uses magnetism and radio waves to take images from inside your body at all angles. It is completely pain-free and requires no injections. The CST whole body MRI includes the whole spine, abdomen, pelvis, and brain (head) and takes approximately 1 hour to perform. You will be able to listen to music with special headphones for the duration of the scan. A full safety questionnaire will be undertaken prior to your attendance at the clinic to exclude any possible contra-indications.

IS THE PROCESS SAFE?

Yes. MRI scans have been used since the 1980s and are proven safe. Unlike other medical imaging procedures such as CT (CAT scan) and X-ray, MRIs do not expose you to harmful radiation.

HOW LONG DO I STAY WITH THE PROGRAMME

We advise clients to have the blood test annually and the MRI scan every 3 years. You are under no obligation to repeat the process, but we keep in regular contact to remind you of the renewal dates and to help you with your health goals. We can offer help and advice on making lifestyle changes that reduce your risk of having cancer including an introduction to mindfulness and improving your sleep patterns.

WHAT DO MY RESULTS MEAN?

Two weeks after your blood draw appointment, you will be called with your results and a report will be sent to your email address. The results will be either positive, negative or indeterminate.

- A positive result reveals that circulating tumour cells were detected in your blood sample, indicating a higher risk of the presence of cancer.
- A negative result means circulating tumour cells were not detected in your blood sample, indicating a lower risk of the presence of cancer.
- An indeterminate result means that circulating tumour cells were detected in the given blood sample, however the type of cancer or organ of origin could not be determined. In these cases, we offer another test free of charge.

Please be mindful that in negative results of the Trucheck test, the presence of cancer is not completely ruled out as some cancers may not shed detectable tumour cells in the blood. Individuals with positive findings will be given the appropriate guidance and additional standard of care. Regardless of your results, you will receive a thorough consultation with our in-house doctor or oncologist to discuss the report in more detail.

The Cancer
Screening
Trust

CST

DATAR CANCER GENETICS



CERTIFICATIONS/ACCREDITATIONS OF DATAR CANCER GENETICS INDIA



CONTACT US:

Email: hello@thecancerscreeningtrust.co.uk

Telephone: 01935 725005

Media Enquiries: 07807 685499



@cancerscreeningtrust | CancerScreeningTrust | The Cancer Screening Trust | @CScreeningTrust